

Characteristics / Ordering Code

Pilot operated relief valve with proportional adjustment. Series VBY*K is a pilot operated pressure valve with external drain.

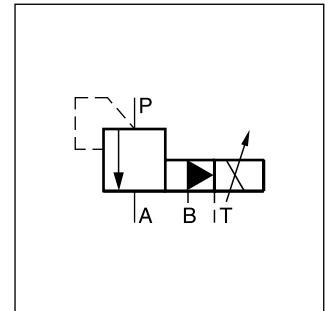
The optimum performance can be achieved in combination with the digital amplifier module PCD00A-400.

Features

- Proportional adjustment
- Subplate mounting acc. to ISO 5781
- External drain
- Main stage spool type valve
- Pilot stage seated type valve

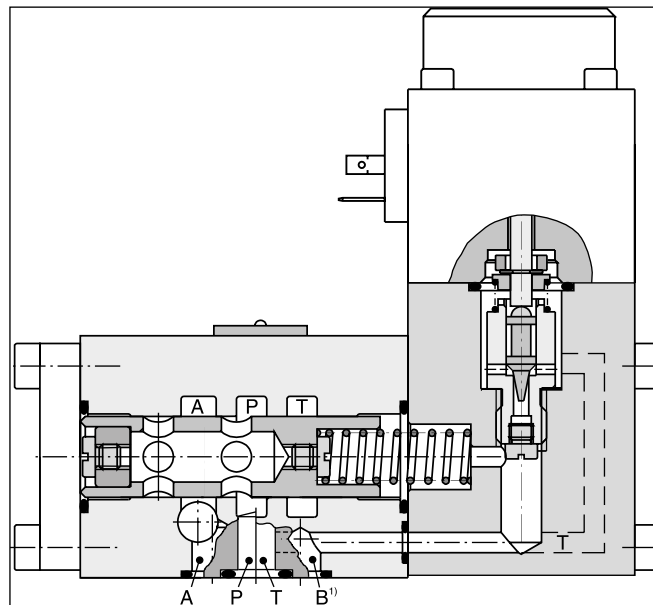


VBY*K06

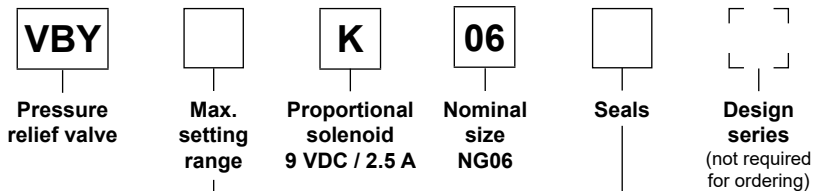


VBY*K06

4



Ordering code



Code	Max. setting range
064	64 bar
100	100 bar
160	160 bar
210	210 bar
315	315 bar

Code	Seals
N	NBR
V	FPM

Bold letters = Short-term availability

¹⁾ Port B for remote control, otherwise to be blocked.

Technical Data / Characteristic Curves

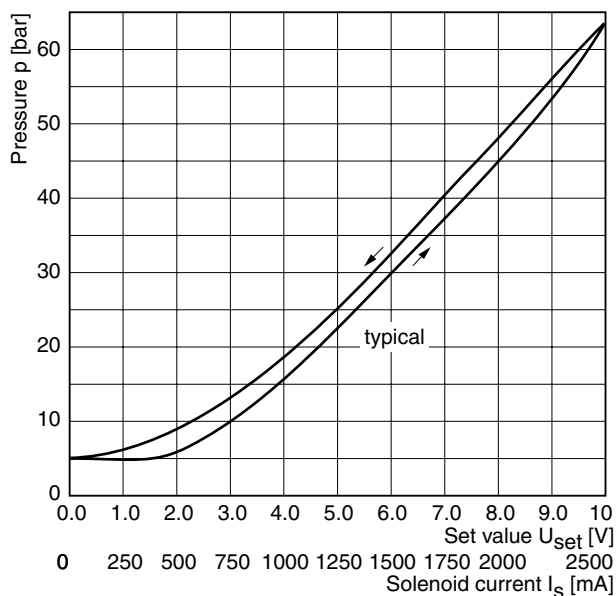
Technical data

General			
Design	Proportional pressure relief valve		
Nominal size	NG06		
Interface	Subplate mounting according to ISO 5781		
Actuation	Proportional solenoid		
Mounting position	unrestricted		
Ambient temperature	[°C]	-20 ... +60	
MTTF _D value	[years]	75	
Weight	[kg]	2.4	
Hydraulics			
Max. operating pressure	[bar]	P, A: 315, Port B blocked, Port T depressurized	
Nominal flow	[l/min]	40	
Adjustment range	[bar]	up to 64, 100, 160, 210, 315	
Fluid	Hydraulic oil according to DIN 51524		
Viscosity	permitted	[cSt] / [mm ² /s]	20 ... 400
	recommended	[cSt] / [mm ² /s]	30 ... 80
Fluid temperature	[°C]	-20...+70 (NBR: -25...+70)	
Filtration	ISO 4406; 18/16/13		
Linearity	[%]	±3.5 at > 15 % pnom.	
Repeatability	[%]	<±2	
Hysteresis	[%]	<3	
Response time	[ms]	<150	
Electrical			
Duty ratio	[%]	100 ED	
Protection class	IP65 at EN 60529 (with correctly mounted plug-in connector)		
Nominal voltage	[VDC]	9	
Max. current	[A]	2.7	
Nom. current	[A]	2.5	
Ambient temperature	[°C]	-20...+70	
Coil resistance	[Ohm]	2.1 at 20 °C	
Solenoid connection	Connector as per EN 175301-803		
Power amplifier	PCD00A-400		

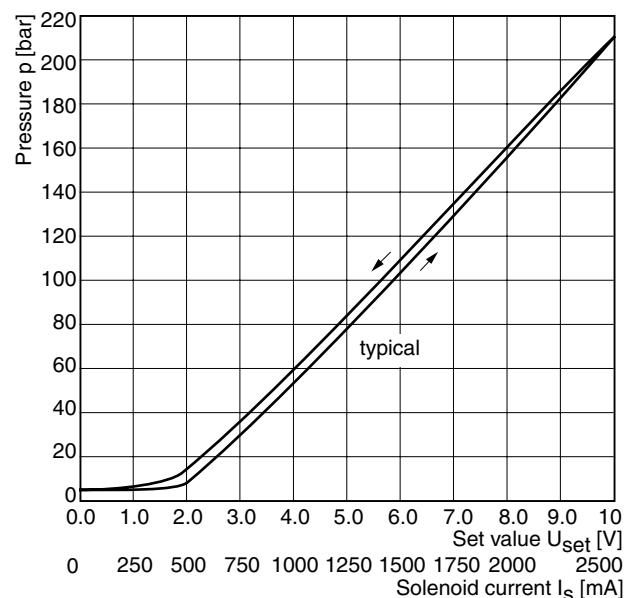
4

Characteristic pressure curves, $p = f(U_{set})$

Setting range max. 64 bar



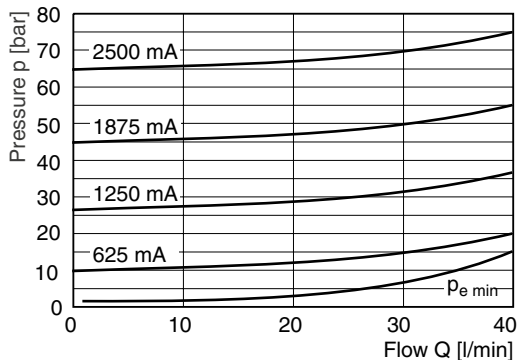
Setting range max. 210 bar



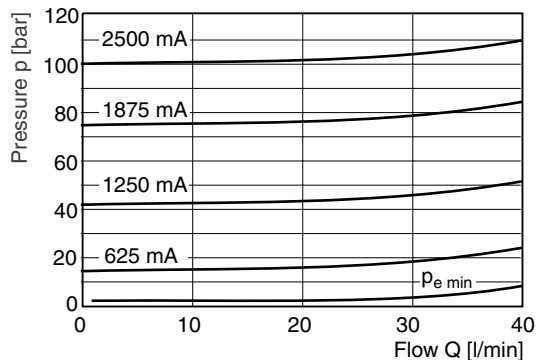
All characteristic curves measured with HLP46 at 50 °C.

P/Q characteristics

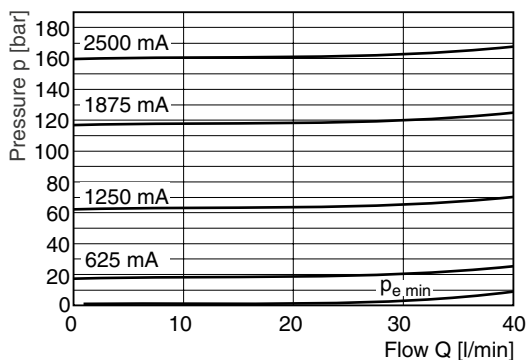
Setting range max. 64 bar



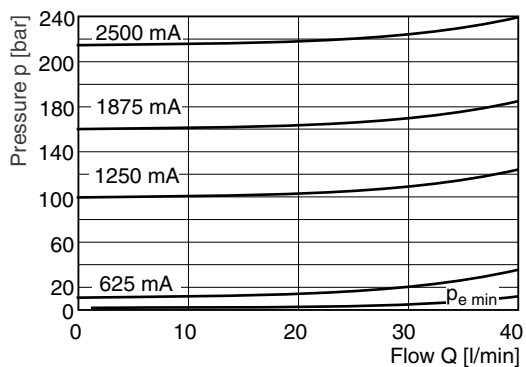
Setting range max. 100 bar



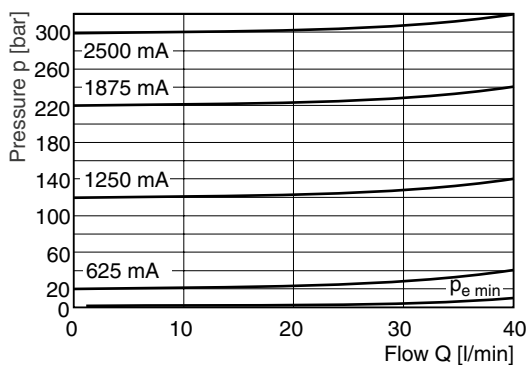
Setting range max. 160 bar



Setting range max. 210 bar



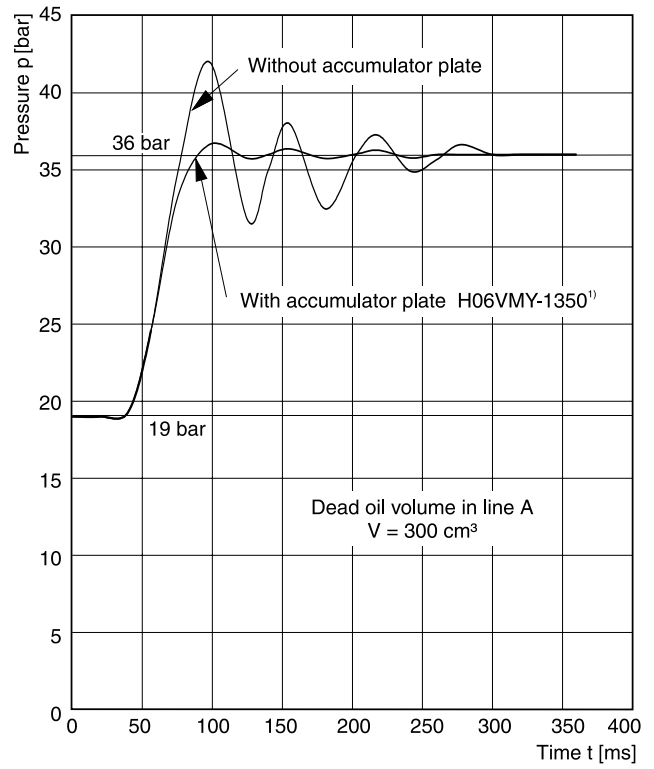
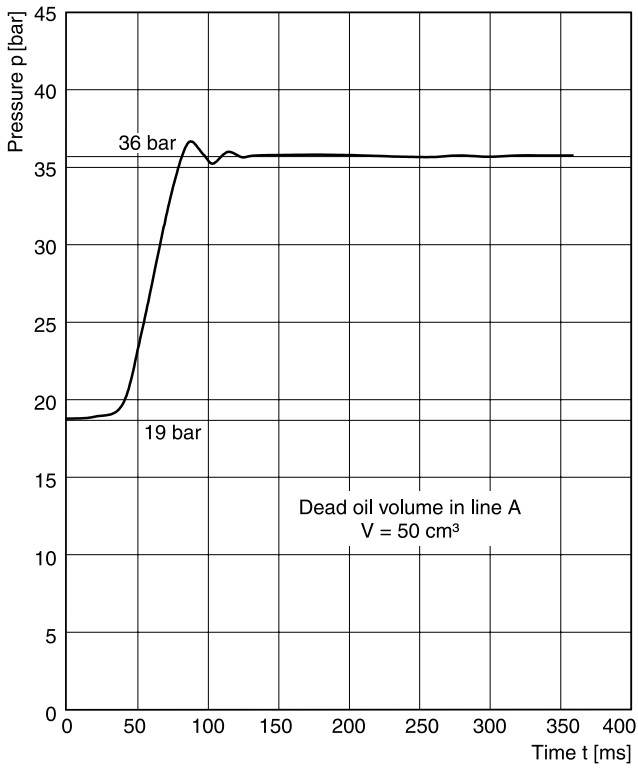
Setting range max. 315 bar



All characteristic curves measured with HLP46 at 50 °C.

4

Step response signal, setting range max. 210 bar

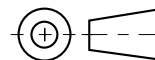
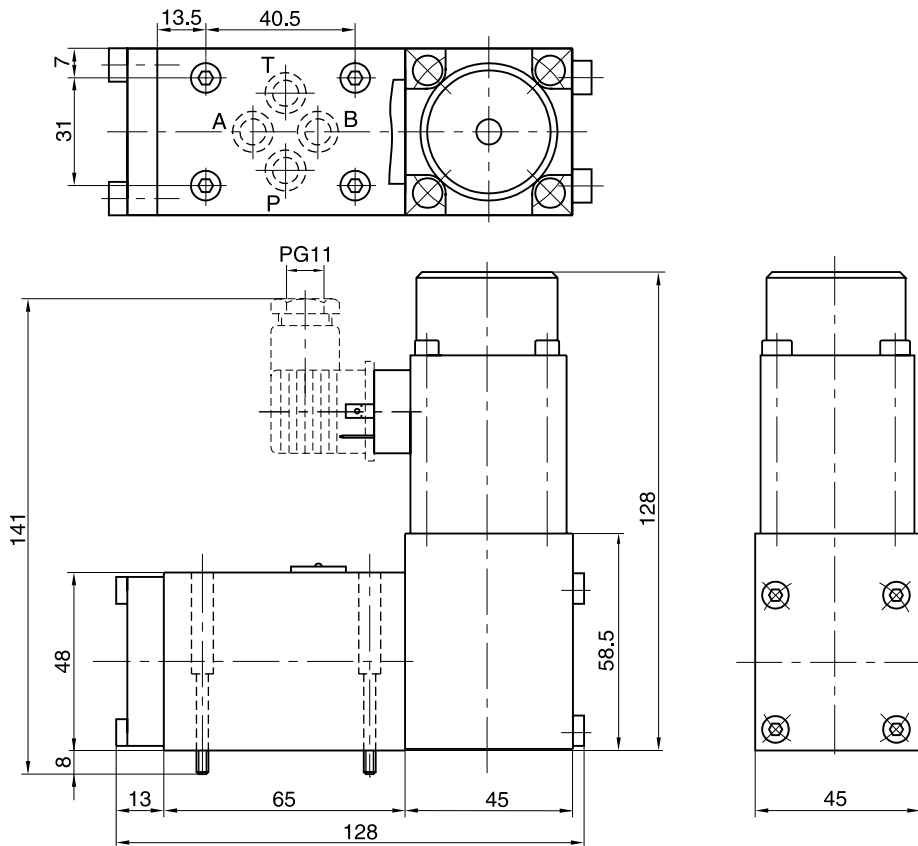


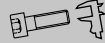

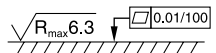
4

All characteristic curves measured with HLP46 at 50 °C.

¹⁾ See series VMY for details.

NG06



Surface finish	Bolt kit			NBR	Kit FPM
	BK375	4x M5x30 ISO 4762-12.9	7.6 Nm ±15 %	SK-VMY-L06-N	SK-VMY-L06-V

Mounting pattern ISO 5781-03-04-0-00

